

Thomas Scornavacca, DO
UMMHC Chief Medical Officer for Population Health



**Best Place to Give Care -
 Best Place to Get Care**

UMass Memorial - Community Healthlink
 UMass Memorial HealthAlliance-Clinton Hospital
 UMass Memorial - Marlborough Hospital
 UMass Memorial Medical Center
 UMass Memorial Medical Group
 UMass Memorial Accountable Care Organization, Inc.

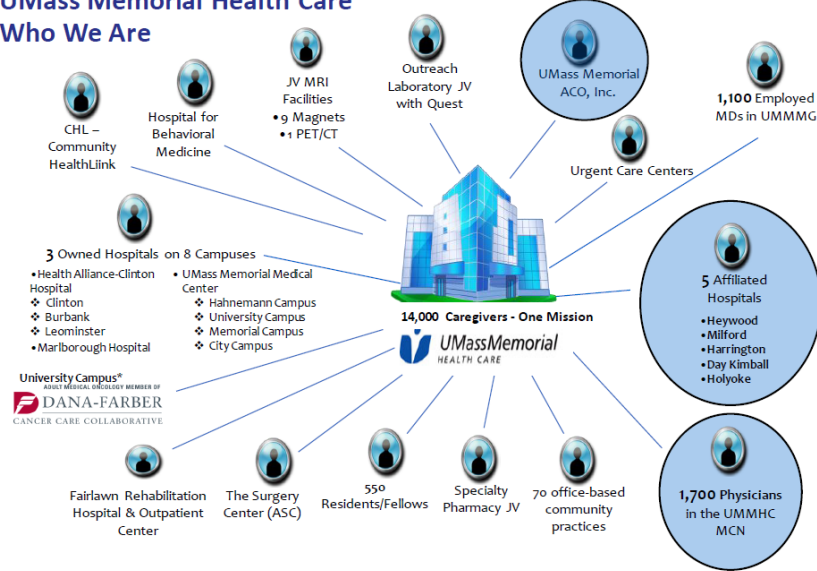


Everyone, Everyday.




1

UMass Memorial Health Care Who We Are



CHL - Community HealthLink

Hospital for Behavioral Medicine

JV MRI Facilities
 • 9 Magnets
 • 1 PET/CT

Outreach Laboratory JV with Quest

UMass Memorial ACO, Inc.

1,100 Employed MDs in UMMHC

Urgent Care Centers

3 Owned Hospitals on 8 Campuses

- Health Alliance-Clinton Hospital
- Clinton
- Burbank
- Leominster
- Marlborough Hospital

UMass Memorial Medical Center

- Hahnemann Campus
- University Campus
- Memorial Campus
- City Campus

14,000 Caregivers - One Mission

UMass Memorial HEALTH CARE

5 Affiliated Hospitals

- Heywood
- Milford
- Harrington
- Day Kimball
- Holyoke

University Campus*
PROVIDES MEDICAL SERVICES IN COLLABORATION WITH
DANA-FARBER
CANCER CARE COLLABORATIVE

Fairlawn Rehabilitation Hospital & Outpatient Center

The Surgery Center (ASC)


550 Residents/Fellows

Specialty Pharmacy JV



70 office-based community practices

1,700 Physicians in the UMMHC MCN

The Clinical Partner of the University of Massachusetts Medical School



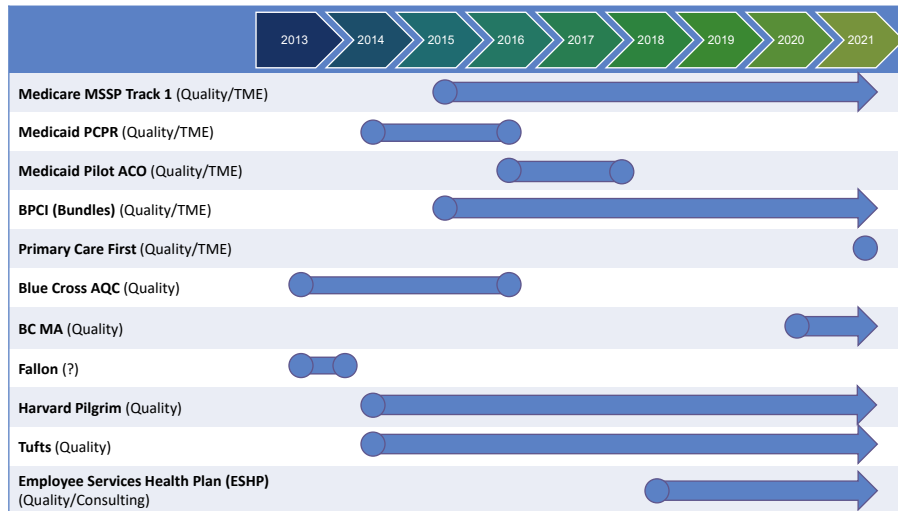
Everyone, Everyday.

Feb 17, 2021

2

UMMHC / OCI Value-based Program Evolution to Date



Confidential - Do Not Share

3

COVID-19 brought the issue of health equity to the forefront



COVID-19 Positive Patients: Race and Ethnicity – Comparison by City

SELECTED CITY: WORCESTER

Race - All	Breakdown of Race by City (%)	Breakdown of COVID+ by R/E In Selected City (%)	Total # of COVID+	COVID+ Source
White	69%	49%	6,218	MAVEN All
Other	10%	27%	3,494	City WORCESTER
Black or African American	13%	18%	2,270	
Asian	8%	5%	685	
American Indian or Alaska Native	0%	0%	45	
Native Hawaiian or Other Pacific ...	0%	0%	16	
Unknown		100%	1,307	
Grand Total	100%	100%	14,035	

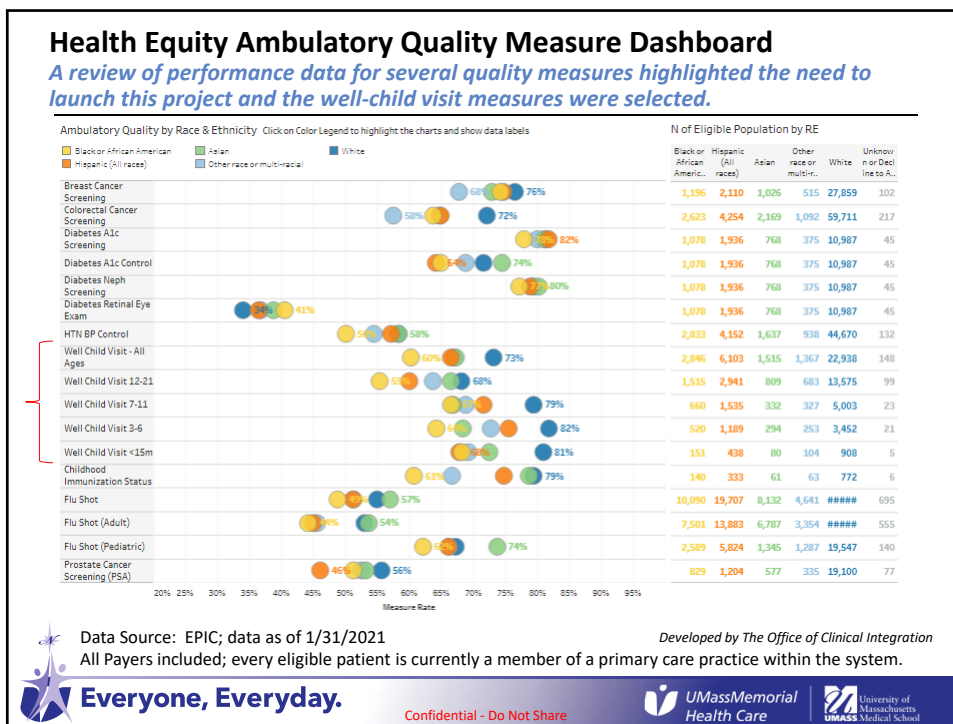
Ethnicity - All	Breakdown of Ethnicity in City (%)	Breakdown of COVID+ by R/E In Selected City (%)	Total # of COVID+
Hispanic or Latino	21%	37%	4,571
Not Hispanic or Latino	79%	63%	7,836
REFUSED		0%	4
Unknown		100%	1,624
Grand Total	100%	100%	14,035

** Calculated based on COVID+ patients with recorded Race or Ethnicity.
Developed by the Office of Clinical Integration

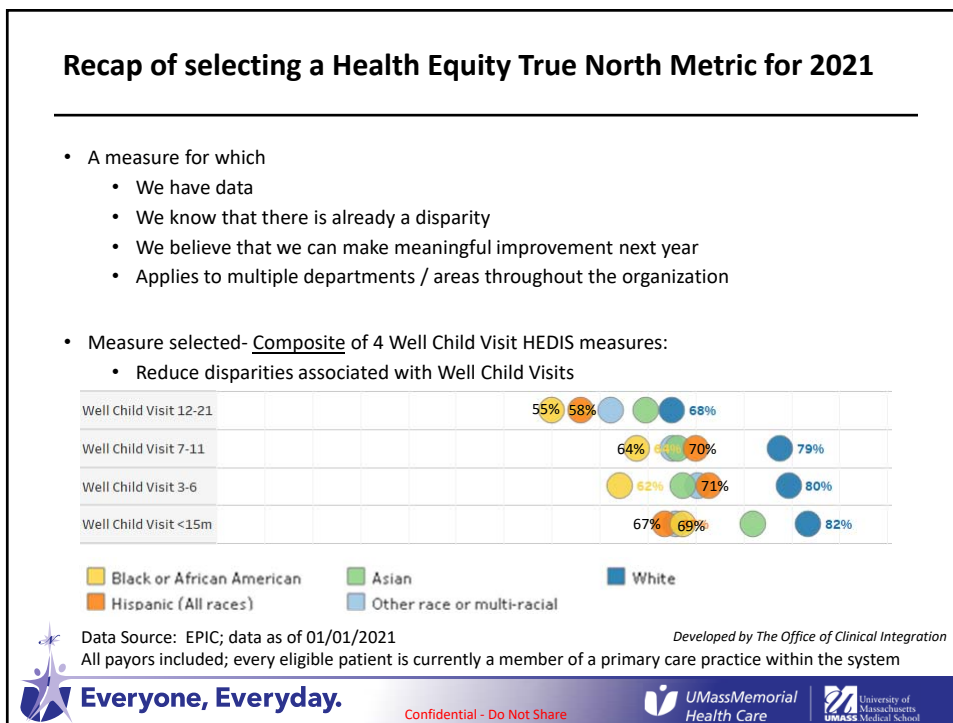
Data Source: MAVEN COVID+ Data (Worcester and 6 surrounding towns) as of 12/30/2020

Confidential - Do Not Share

4



5



6

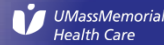
What is CommunityHELP?

- Single place to find free and reduced cost community programs
- Available in 104 languages
- Connect electronically
- Can print resources
- Community involvement
 - 375+ organizations!
 - 1,000+ programs!



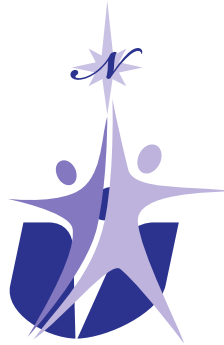
Everyone, Everyday.

Confidential - Do Not Share



7

Best Place To Give Care – Best Place to Get Care

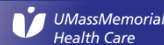


Everyone, Everyday.



Everyone, Everyday.

Confidential – For Internal Use Only



8

8