



2023-24

LEADERSHIP DIRECTORY

HFMA's annual listing of its national, examiner, regional and chapter leaders



CHAIR

Dennis E. Dahlen
FHFMA, MBA, CPA
CFO
Mayo Clinic
Rochester, Minn.



CHAIR-ELECT

Marc B. Scher
FHFMA, CPA
Partner
KPMG LLP
New York, N.Y.



SECRETARY/TREASURER

Kiran N. Batheja
FHFMA
Director, Patient Registration
& Financial Counseling
University Hospital
Newark, N.J.



PRESIDENT/CEO

C. Ann Jordan
JD
Healthcare Financial
Management Association
Downers Grove, Ill.

NATIONAL BOARD OF DIRECTORS

TERMS EXPIRE 2024



Colleen M. Blye
CPA

Executive Vice President/CFO
Montefiore Health System
New York, N.Y.



Maureen A. Clancy
FACHE, CPC

Senior Vice President,
Operations (Retired)
Privia Health
Arlington, Va.



Matthew E. Cox
CHFP, CPA

Senior Vice President/CFO
Corewell Health
Grand Rapids and
Southfield, Mich.

TERMS EXPIRE 2025



**Carladenise Armbrister
Edwards**
PhD

Strategic Advisor
Detroit, Mich.



David W. Johnson

CEO
4sight Health
Chicago, Ill.



Marcus Whitney

Founder and Managing Partner
Jumpstart Nova
Nashville, Tenn.

TERMS EXPIRE 2026



Nikki Harper
FHFMA

Division Chair,
Revenue Cycle-Reporting,
Analytics & Automation
Mayo Clinic
Rochester, Minn.



Scott R. Hawig
CPA

Executive Vice President
of Finance, Chief Financial
and Administrative
Officer and Treasurer
Froedtert Health
Milwaukee, Wisc.



Susan K. Nelson
CPA

Executive Vice President & CFO
MedStar Health, Inc.
Columbia, Md.

BOARD OF EXAMINERS



David Bittner
FHFMA, CPA

Vice President/Chief
Revenue Officer
Trinity Health
Livonia, Mich.



Daniel Brown
JD, CHFPA, CPA

Associate Dean for Finance
and Administration
UTHSC College of Dentistry
Memphis, Tenn.



Kimberly Carter
FHFMA

Director of Coding, Professional
Billing Compliance and Health
Information Management
Legacy Health System
Portland, Ore.



David M. Karluk
FHFMA, CRCP

Director, Financial Planning
and Analysis (Retired)
Mary Washington Healthcare
Glen Allen, Va.



Michele M. McGowan
DBA, FHFMA, CPA

Professor and Graduate Program
Director, Healthcare Administration
William G. McGowan School
of Business, King's College
Wilkes-Barre, Pa.



Michele Mecomonaco
FHFMA, CPA

Regional Director of Reimbursement
Trinity Health
Syracuse, N.Y.



Jason Metcalf
FHFMA

Division Director, Corporate
Revenue Cycle
CommonSpirit Health
Prescott, Ariz.



Pamela Ott
FHFMA, CRCP, CPA, FACHE

CFO
Franciscan Alliance
Hammond, Ind.



Barbara Townsend
FHFMA, CRCP, CPC, CPB

Regional Director of Revenue Cycle
McLaren Health Care
Shelby Township, Mich.

NATIONAL ADVISORY COUNCIL



Amy N. Assenmacher
FHFMA, CRCR, CSBI,
MBA, RN

Senior Vice President,
Revenue Cycle
Corewell Health
Grand Rapids, Mich.



Tracy Belsan
DSL, MBA

Market President
SCA Health
PE GI Solutions
Jamison, Pa.



Alyson W. Belz
FHFMA, MBA, MS

Executive Director,
RCM Services
Optum
New York, N.Y.



Alexander Ding
MD, MBA

Vice President,
Physician Strategy
Humana
Louisville, Ky.



Gordon T. Edwards
FHFMA, CPA, MBA

CFO and Treasurer
Akron Children's Hospital
Akron, Ohio



Kerry E. Gillespie
CPA

Independent Consultant
Orem, Utah



Prabhjot K. Grewal
CHFPA, CRCR, MHA

Vice President,
Revenue Cycle
Montefiore Health System
Tarrytown, N.Y.



Lee J. Handke
PharmD, MBA

CEO
Nebraska Health Network
Omaha, Neb.



Jared R. Heim
CHFPA, CPA

Partner
Eide Bailly LLP
Dubuque, Iowa



Laurie A. Hurwitz
FHFMA, CRCR, MBA

Senior Vice President
Revenue Cycle &
Managed Care
OSF HealthCare
Peoria, Ill.



Sandra K. Johnson
FHFMA, MBA, MHA,
FACHE

Vice President and
Chief Revenue Officer
Medstar Health
Columbia, Md.



Pat A. Keel

Chief Financial and
Administrative Officer
St. Jude Children's
Research Hospital
Memphis, Tenn.



Beth A. King

CEO
Jersey Community Hospital
Jerseyville, Ill.



Jeff Logan

Group Vice President,
Revenue Cycle Patient
and Market Experience
Providence
Camarillo, Calif.



Praveen Mekala
CHFP, CRCR, MBA

Division Chair, Enterprise
Revenue Cycle & Leader
MCCCC Finance
Mayo Clinic
Rochester, Minn.



Adrienne Moore
DrPH, FACHE, MBA

Vice President,
Revenue Cycle
Banner Health System
Phoenix, Ariz.



Larami Oliver

Director, Revenue
Cycle Management
Heart and Vascular Care
Cumming, Ga.



Amber Reef
MHA

Division Vice President,
Revenue Cycle
Virginia Mason
Franciscan Health
Seattle, Wash.



Brian Restivo
CHFP, MBA

Director, Healthcare
Consulting
Baker Tilly
Columbus, Ohio



Kimberly Scaccia

Vice President,
Revenue Cycle
Mercyhealth
Janesville, Wisc.



Monica L. Schmude

President, Virginia
Anthem Blue Cross
and Blue Shield
Richmond, Va.



Karen A. Shadowens
FHFMA, CPA, MBA

CFO
UNC Health
Rockingham, Eden,
N.C., and UNC Health
Caldwell, Lenoir, N.C.



Brian Sweatman
FSA, MAAA, MBA

Principal & Consulting
Actuary
Milliman
Atlanta, Ga.

REGIONAL EXECUTIVES

REGION 1



Sarah Ginnetti

Associate Vice President,
Revenue Cycle
UConn Health
Medical Center
Farmington, Conn.

REGION 2



Wendy Leo
FHFMA

Regional Vice President
Tritech Healthcare
Management
Melville, N.Y.

REGION 3



Anne Del Pizzo

Director
PATHS, LLC
Cherry Hill, N.J.

REGION 4



William McCone

Senior Vice President,
Health Care Payment
Maryland Hospital
Association
Severna Park, Md.

REGION 5



Ken Scheller

IT Director, Revenue Cycle
Lexington Medical Center
West Columbia, S.C.

REGION 6



Nadia Vincenti

Finance Director
University Hospitals
of Cleveland
Broadview Heights, Ohio

REGION 7



Dan Yunker

CEO
Crowe Healthcare
Risk Consulting
Chicago, Ill.

REGION 8



Jean Nyberg

Partner
FORVIS
Springfield, Mo.

REGION 9



Kim Hebert

Vice President of Regional
Finance and OLGMC CFO
Ochsner Lafayette General
Lafayette, La.

REGION 10



Chad Krcil
FHFMA

Managing Director
BDO USA, LLP
Highlands Ranch, Colo.

REGION 11



Sam King
FHFMA, CRCR

Faculty, USC, and
Chief Digital Officer,
AIHANG Technology
Laguna Niguel, Calif.

CHAPTER PRESIDENTS

REGION 1

CONNECTICUT



Susan Prior
CHC

Principal
BerryDunn
New Haven, Conn.

MASSACHUSETTS/RHODE ISLAND



Kimberly Carlozzi
CSMC

Senior Manager
PwC
Milton, Mass.

NORTHERN NEW ENGLAND



Zachary Colby
CRCR

Patient Financial
Services Manager
North Country Healthcare
Whitefield, N.H.

EMPIRE NEW YORK



Barbara Piascik
FHFMA, CRCR, CHC

Chief Compliance Officer
Bergen New Bridge
Medical Center
Paramus, N.J.

REGION 2

METROPOLITAN NEW YORK



Andrew Weingartner
FHFMA, CRCR

Director
Jzanus Consulting, Inc
West Hempstead, N.Y.

ROCHESTER REGIONAL



Jason Zawodzinski

Senior Director,
Communication Center
Rochester Regional Health
Webster, N.Y.

PUERTO RICO



Jorge Santiago Medina
CHFP, CRCR, CSPPM

CFO
Corporación Centro
Cardiovascular de Puerto
Rico y del Caribe
Fajardo, Puerto Rico

CENTRAL PENNSYLVANIA



Christopher Schenkel
CHFP, CRCR

Director of Finance
Penn State Health
Reading, Pa.

REGION 3

METROPOLITAN PHILADELPHIA



Edward Coyle
Esq, FHFMA, CPA

Director of Third Party
Reimbursement
Trinity Health
Newtown Square, Pa.

NEW JERSEY



Heather Stanisci

Executive Director
Annuity Health
Reading, N.J.

NORTHEASTERN PENNSYLVANIA



Melissa Kern
CHFP, CRCR

Manager, Professional
Operations
Geisinger Health System
Berwick, Pa.

WESTERN PENNSYLVANIA



Patrick McKenna
CRCR

Account Executive
3M
Wexford, Pa.

CHAPTER PRESIDENTS (CONTINUED)

REGION 4

KENTUCKY



Haley Howard

Healthcare Consultant
FORVIS
Louisville, Ky.

MARYLAND



Brian Sims

Vice President,
Quality & Equity
Maryland Hospital
Association
Baltimore, Md.

NORTH CAROLINA



Christine Sibley
FHFMA

Assistant Vice President,
Managed Health
Advocate Health
Hilton Head Island, S.C.

VIRGINIA-WASHINGTON, D.C.



Chris Branin
FHFMA

Director of Budgets
UVA Health
Charlottesville, Va.

WEST VIRGINIA



Chris Rawlings
CHFP

CEO
HospiceCare
Charleston, W.Va.

ALABAMA



Roze Seale
CRCR

Vice President, Client
Engagement
Revecore
Mobile, Ala.

FLORIDA



Natalie Billo

Senior Managed Care
Contract Manager
Lakeland Regional Health
Lakeland, Fla.

GEORGIA



Adam Gobin
CHFP

Assistant Vice President,
Revenue Cycle
Wellstar Health System
Marietta, Ga.

REGION 5

SOUTH CAROLINA



Jen Hayes
FHFMA

Director of Revenue
Cycle Integrity
Lexington Medical Center
West Columbia, S.C.

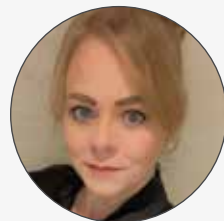
TENNESSEE



Chase Wunder

Director of Business
Development
Wakefield
Knoxville, Tenn.

MICHIGAN GREAT LAKES



Ariana Raymond

Manager, Provider
Enrollment
Trinity Health
Westland, Mich.

REGION 6

CENTRAL OHIO



Lauree Handlon
FHFMA, CRCR, CSAF

Director, Data Quality
& Reimbursement
Cleverley + Associates
Worthington, Ohio

REGION 6 continued

NORTHEAST OHIO



Andy Emrhein

Consultant
Emrhein and Associates
Berea, Ohio

NORTHWEST OHIO



Jacob Wethington

Manager, Healthcare
Reimbursement
& Consulting
Blue & Co., LLC
Westerville, Ohio

SOUTHWESTERN OHIO



Amanda Ricci

System Vice President,
Revenue Cycle
Premier Health
Franklin, Ohio

REGION 7

FIRST ILLINOIS



Katie White

Vice President, Finance
& Performance Strategy
Innovista Health Solutions
Woodridge, Ill.

GREATER ILLINOIS



Kara McAdam
CHFP

Executive Director
of Finance
Gibson Area Hospital
Gibson City, Ill.

INDIANA PRESSLER MEMORIAL



Nicholas Eichelman
FHFMA

Partner
FORVIS
Indianapolis, Ind.

WISCONSIN



Matthew Clark
FHFMA

Revenue Integrity
Supervisor
Froedtert Health
Wauwatosa, Wis.

REGION 8

GREATER HEARTLAND



Connie Warnat

Regional Sales Executive
PCM
Lenexa, Kan.

IOWA



Jennifer Peterson
FHFMA

Decision Support
Analyst III
CommonSpirit Health
Altoona, Iowa

MINNESOTA



Nick Ward

Senior Manager
RSM
Minneapolis, Minn.

NEBRASKA



Kyle Teel
FHFMA, CRCR

Corporate Controller
Community Hospital-
McCook
McCook, Neb.

NORTH DAKOTA



Sandra Rittel
CRCR

Reimbursement Manager
Sanford Health
Bismarck, N.D.

CHAPTER PRESIDENTS (CONTINUED)

SOUTH DAKOTA



Austin Willuweit
FHFMA, CSAF

Vice President, Finance
Monument Health
Rapid City, S.D.

SUNFLOWER (KANSAS)



Tanner Wealand
FHFMA, CRCR

CFO
McPherson Hospital
Hutchinson, Kan.

REGION 9

ARKANSAS



Brittany Loar

Operations Manager
PatientMatters
Haskell, Ark.

LONE STAR



Tammy Walsh
FHFMA, CRCR

CEO/Founder
Paramount Healthcare
Solutions
Flower Mound, Texas

LOUISIANA



Teresa Jenkinson
CHFP, CPA, MBA

CFO
Meridian Behavioral
Healthcare
Ocala, Fla.

MISSISSIPPI



Kimberly Williams

CFO
Medical Management
Services
Ridgeland, Miss.

OKLAHOMA



Tyler Bernier
FHFMA, CPA

Partner
Eide Bailly
Oklahoma City, Okla.

SOUTH TEXAS



Thomas Camp

Director of Sales
ECLAT Health
Solutions, Inc.
Herndon, Va.

TEXAS GULF COAST



Christopher Spilker
CHFP, CRCR

Regional Vice President
Cloudmed
The Woodlands, Texas

REGION 10

ARIZONA



Jason Metcalf
FHFMA

Division Director,
Corporate Revenue Cycle
CommonSpirit Health
Prescott, Ariz.

COLORADO



Dina Prince
CHFP

Vice President, Revenue
Cycle Management
Amerita
Centennial, Colo.

IDAHO



Bray Manderson

Senior Vice President
of Sales
Aspirion
Columbus, Ga.

REGION 10 continued

MONTANA



Shawna Talles
CRCR

Director of Client
Experience Management
Revenue Enterprises LLC
Helena, Mont.

NEW MEXICO



Jason Sanchez
CHFP

CFO
Southwest Care Center
Santa Fe, N.M.

UTAH



Kimberly Telford

Vice President,
Customer Operations
R1 RCM
Salt Lake City, Utah

WYOMING



Darcy Robertson
CSMC

CFO
North Big Horn Hospital
Lowell, Wyo.

REGION 11

HAWAII



Brenda Parinas

Supervisor Administrative
Support
Kaiser Permanente
Honolulu, Hawaii

NEVADA



Vanessa Couch-Laguana
CRCR, CPC

Director of Coding,
Integration and Analytics
Kaiser
Las Vegas, Nev.

NORTHERN CALIFORNIA



John Thibeau
FHFMA

Senior Financial Analyst
Montage Health
Monterey, Calif.

OREGON



Tony Andrade
CPA

Partner
Moss Adams LLP
Portland, Ore.

SAN DIEGO-IMPERIAL



Perla Pace

Manager
Optum
San Diego, Calif.

SOUTHERN CALIFORNIA



Brian Mattson

Sales Director
Manifest Medex
Oak Park, Calif.

WASHINGTON/ALASKA



Ann Peterson
CHFP

Ambulatory Services
Financial Officer
EvergreenHealth
Kirkland, Wash.