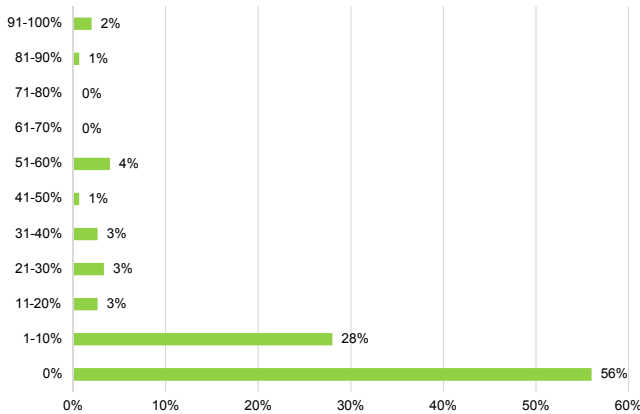
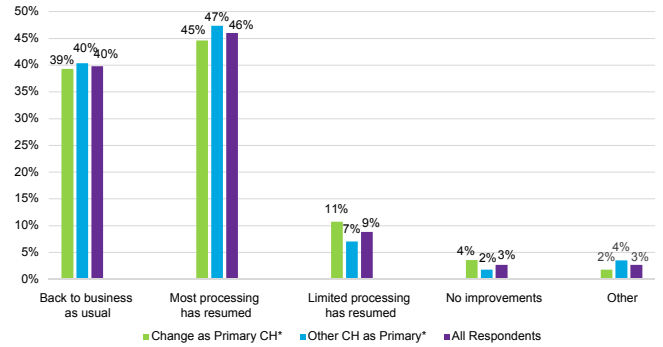


# Change Healthcare Impact: Market Pulse #3

**What percentage of payers impacted by the Change Healthcare outage have assisted your health system with advance payments or loans?**

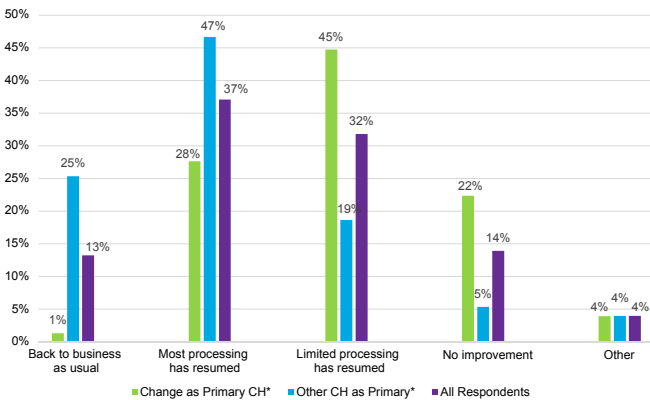


**What is the current status of your pharmacy network services impacted by the Change outage?**



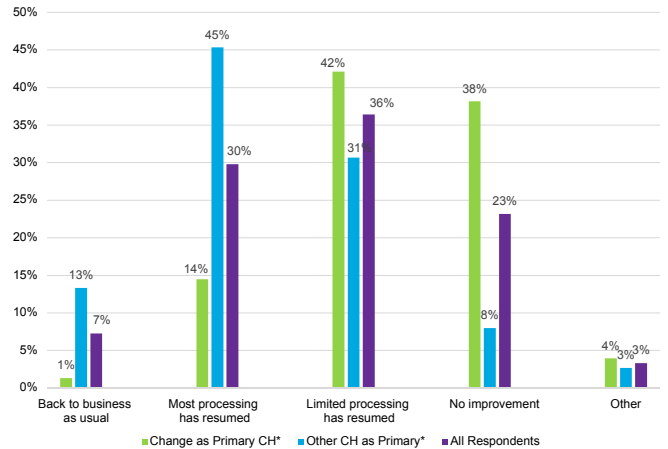
Note: Only health systems with pharmacies were included

**What is the current status of your ability to bill claims to payers impacted by the Change outage?**

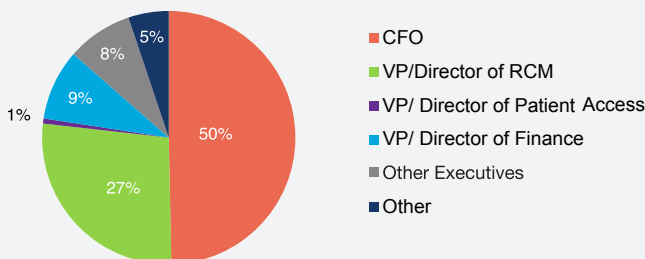


\*CH is an abbreviation for Clearinghouse. Clearinghouses enable providers to submit electronic claims and receive electronic remittance information.

**What is the current status of your ability to receive payments and remits from payers impacted by the Change outage?**



**What is your title?**



## Methodology

Eliciting Insights and HFMA conducted a survey on the impact of the Change Healthcare outage March 22-26, 2024. 155 Health System Executives responded to the survey.